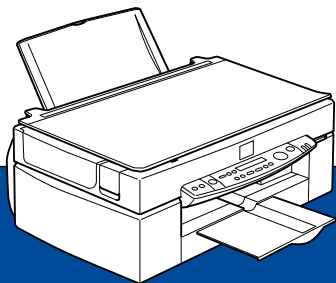


# EPSON

All in One Product



**EPSON STYLUS™ SCAN 2500**

*Online Guide*

3002776-00

# ***Introduction***

---

This CD-ROM includes the following online guides.

❑ **Reference Guide**

To learn more about your Stylus Scan, see this guide. It includes detailed information on printing, scanning, copying, and troubleshooting. You can view this guide directly from the CD, or install it on your computer and view it from your hard disk.

❑ **Color Guide**

See this guide to learn about color imaging basics and advanced techniques. It includes samples and troubleshooting information to help answer your color printing questions. View it directly from the CD.

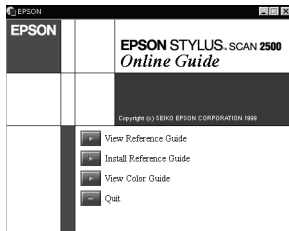
***Note:***

*A Web browser must be installed on your computer to read these guides.*

# Opening the Online Guides

## For Windows

1. Insert the online guide CD in your CD-ROM drive.
2. The dialog box on the right appears. If it does not, double-click the **My Computer** icon, click the **CD-ROM** icon, then select **Open** from the File menu. Then double-click **ESS2500.exe**.
3. Click the appropriate **View** button to open the guide of your choice.



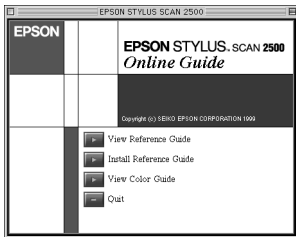
To install the Reference Guide on your hard disk, click **Install Reference Guide** and follow the on-screen instructions. When the installation is complete, a **ESS2500 Guide** icon appears in the EPSON folder. Double-click the icon to open the guide.

### **Note:**

*If your hard disk does not have enough space to install the Reference Guide, view it directly from the CD.*

## For Macintosh

1. Insert the online guide CD in your CD-ROM drive.
2. Double-click **EPSON STYLUS SCAN 2500**. The dialog box on the right appears.
3. Click the appropriate **View** button to open the guide of your choice.



To install the Reference Guide on your hard disk, click **Install Reference Guide** and follow the on-screen instructions. When the installation is complete, a **View Reference Guide** icon appears in the EPSON STYLUS SCAN 2500 folder. Double-click the icon to open the guide.

### **Note:**

*If your hard disk does not have enough space to install the Reference Guide, view it directly from the CD.*

## ***Installing Microsoft<sup>®</sup> Internet Explorer***

---

A Web browser is required to view the online guides. If you do not know whether you have a web browser installed on your computer, try to view an online guide. If you receive a message instructing you to install a browser, follow the instructions in this section to install Microsoft Internet Explorer from the online guide CD.

### ***For Windows***

1. Insert the online guide CD in your CD-ROM drive. If a dialog box appears with options to view or install the guides, click **Quit**.
2. Double-click the **My Computer** icon, click the **CD-ROM** icon, then select **Open** from the File menu.
3. Double-click the **Browser** folder.
4. Double-click **Win95nt** then double-click **ie**.
5. Double-click **ie5setup.exe** (the number may vary by version) for Windows 95/ 98 and follow the on-screen instructions.

---

## ***For Macintosh***

1. Insert the online guide CD in your CD-ROM drive.
2. Double-click the **Browser** folder.
3. Follow the on-screen instructions to install Internet Explorer.

## ***System Requirements for Windows***

---

System:	Microsoft Windows <sup>®</sup> 95 or 98
CPU:	i486/25 MHz (for Windows 95) i486/66 MHz (for Windows 98) (Pentium or better recommended)
Memory:	16MB (32 MB or more recommended)
Hard disk space:	5 MB to install the Reference Guide 45 MB to install Microsoft Internet Explorer
CD-ROM drive:	Double-speed (Quad-speed or better recommended)

---

Display: 640 x 480 pixel or 800 x 600 pixel resolution, with High Color (16 bit) or True Color (32 bit) setting

Browser: Web browser  
(Microsoft Internet Explorer 4.0 or later recommended)



## ***System Requirements for Macintosh***

---

System:	System 8.1+iMac update 1.0 (System 8.5.1 or later recommended)
Memory:	16 MB (32 MB or more recommended)
Hard disk space:	4 MB to install the Reference Guide 15 MB to install Microsoft Internet Explorer
CD-ROM drive:	Double-speed (Quad-speed or better recommended)
Display:	Color monitor with 640 x 480 pixel resolution or greater (Thousands of colors recommended)
Browser:	Web browser (Microsoft Internet Explorer 4.0 or later recommended)

**EPSON**

All in One Product

**EPSON STYLUS™ SCAN 2500**

*Online Guide*

4010726-00